



# FLEX<sup>3</sup>PRO

FLEXO SYSTEM ANALYZER

HIGH END SOLUTION FOR HIGH QUALITY FLEXO



**PATENT  
PENDING**

# HIGH END SOLUTION FOR HIGH QUALITY FLEXP



## FLEXP3 PRO FLEXP SYSTEM ANALYZER

### Measure

- Film
- Laser Mask
- Flexo Plate
- Print

### Verify

- Dot Area
- Screen Ruling
- Bar Code Width
- Dot Shape
- Stain Density

### Analyze

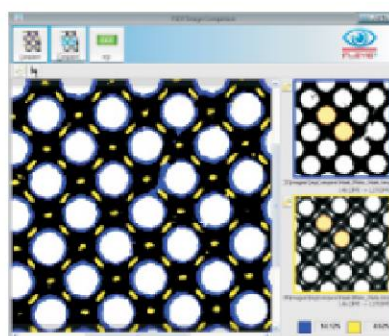
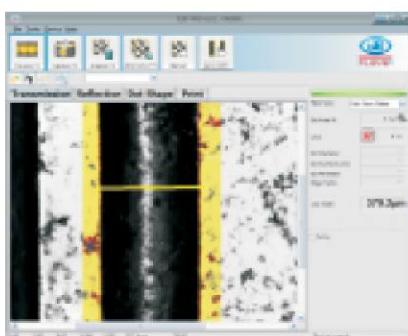
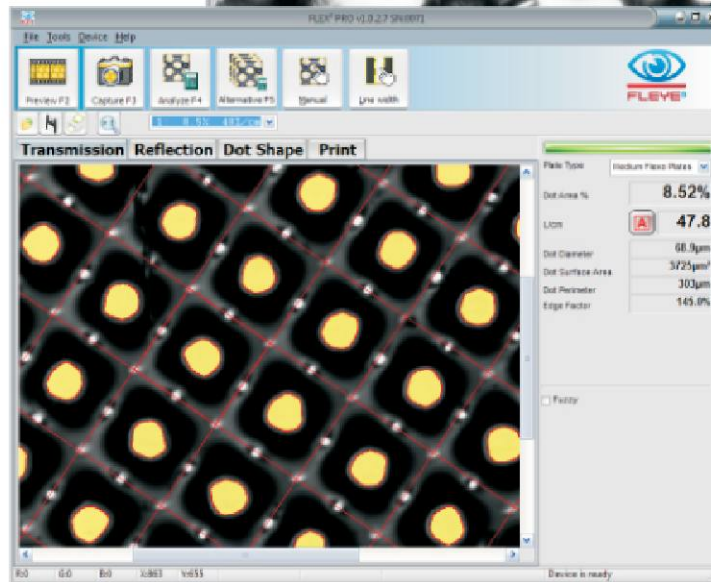
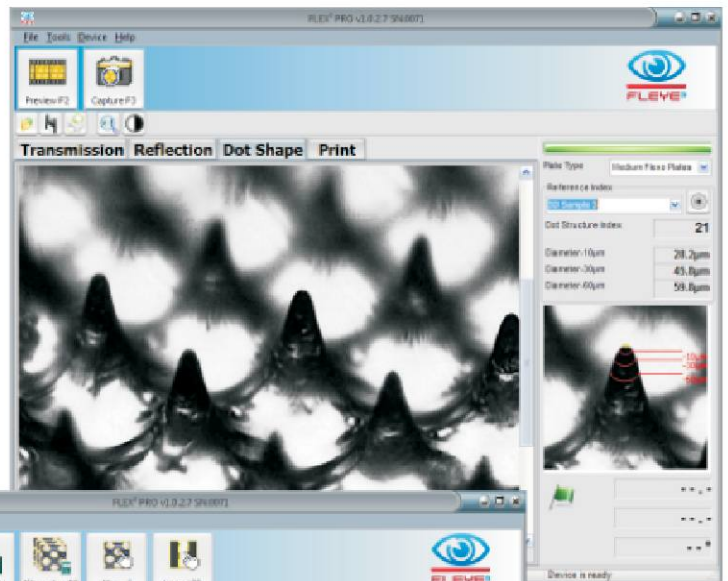
- Full Stochastic Screen
- 40LPI to 400LPI
- Minimum Dot

### Generate

- Statistic Reports

### Calibrate

- Reference on Glass









official dealer

The logo for KGF consists of the letters "KGF" in a large, bold, blue sans-serif font. To the right of the letters is a stylized graphic of a blue ink bottle with a black cap, connected to a black line that forms a shape resembling a printer's carriage or a stylized '3'.

KIRCHHOFF GRAPHISCHER FACHHANDEL  
Eschengrund 3a · 38723 Seesen  
Tel.: 05381/2639 · Fax:05381/5639  
[www.grafischer-fachhandel.de](http://www.grafischer-fachhandel.de)